

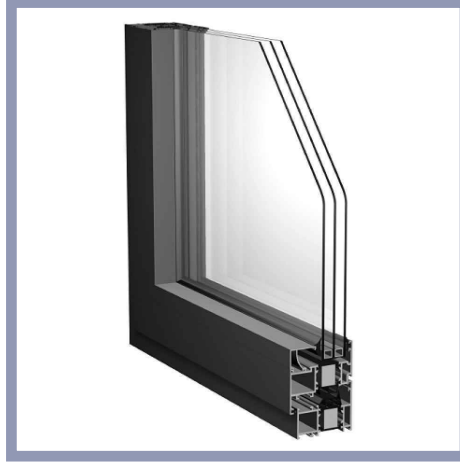
MİMARİ KATALOG ARCHITECTURAL CATALOGUE

Alüminyum Kapı Pencere ve Giydirme Cephe Sistemleri
Aluminium Window Doors and Facade Systems

RESCARA



ENERJİ DELTA



TEKNİK ÖZELLİKLER / TECHNICAL PROPERTIES

KASA DERİNLİĞİ / FRAME DEPTH	75 mm
KANAT DERİNLİĞİ / VENT DEPTH	65 / 85 mm
PROFİL ET KALINLIĞI / PROFILE WALL THICKNESS	1,4/2 mm
MAX. CAM KALINLIĞI / MAX. GLASS THICKNESS	48 / 58 mm
ISI BARIYERİ / THERMAL INSULATION BARS	34 mm straforlu / with styrofoam

PERFORMANS DEĞERLERİ / PERFORMANCE VALUES

HAVA GEÇİRGENLİĞİ / AIR PERMEABILITY	EN 12207	CLASS 4 (600 pa)
SU SIZDIRMAZLIĞI / WATERTIGHTNESS	EN 12208	E 900 (900 pa)
RÜZGAR YÜKÜNE DAYANIM / RESISTANCE TO WIND LOAD	EN 12210	C3 (1200 pa)
ISI YALITIM DEĞERİ (UF) / THERMAL INSULATION VALUE (UF)	EN 10077-2	1,752 W/m ² k

UYGULAMA SEÇENEKLERİ / APPLICATION OPTIONS

	PENCERE WINDOW	KAPI DOOR
İÇE AÇILIR / INWARD OPENNING	•	•
VASİSTAS / BOTTOM HUNG	•	
DIŞA AÇILIR / OUTWARD OPENNING		•
DIŞA - İÇE AÇILIR HEMYÜZ KAPI / INWARD-OUTWARD OPENNING COPLANAR DOOR		•
ÇİFT EKSEN AÇILIM / TILT&TURN OPENNING	•	•
PVC AKSESUARA UYGUN KANAT / VENT FOR PVC ACCESSORIES	•	•
ÇEK & SÜR / TILT&SLIDE	•	•
KATLANIR / FOLDING	•	•

MİMARİ KATALOG ARCHITECTURAL CATALOGUE

Alüminyum Kapı Pencere ve Giydirme Cephe Sistemleri
Aluminium Window Doors and Facade Systems



Rescara Sistem Detayları
Rescara System Details

ENERJİ DELTA

DETAYLAR

DETAILS

01

02

03

04

05

06

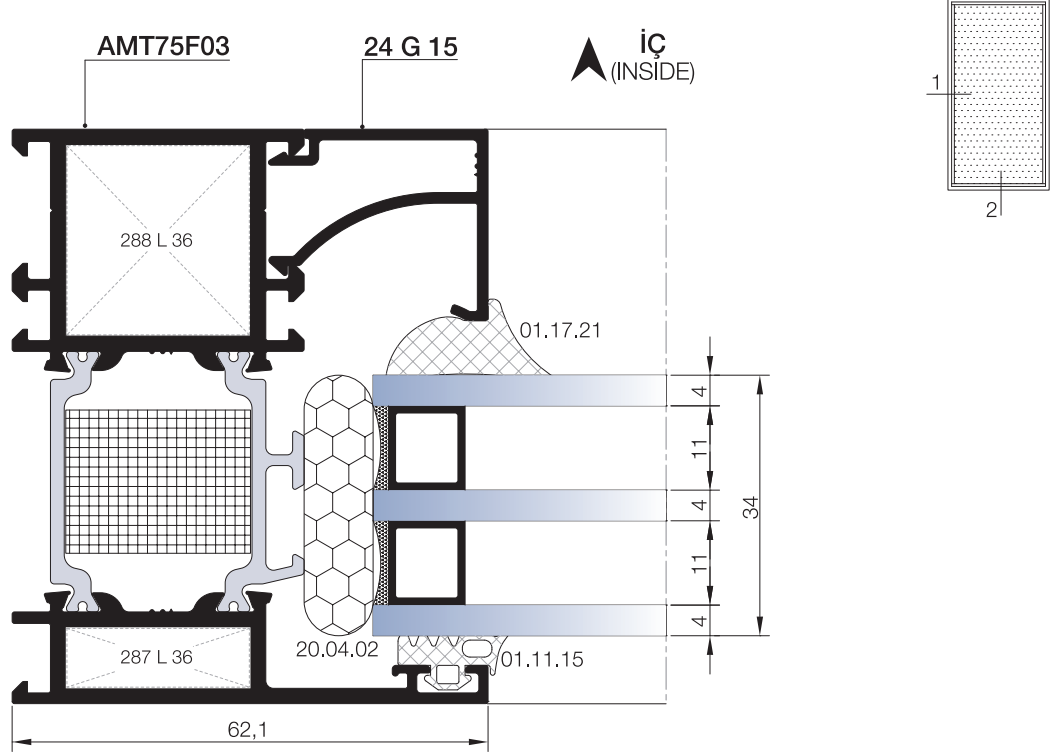
07

08

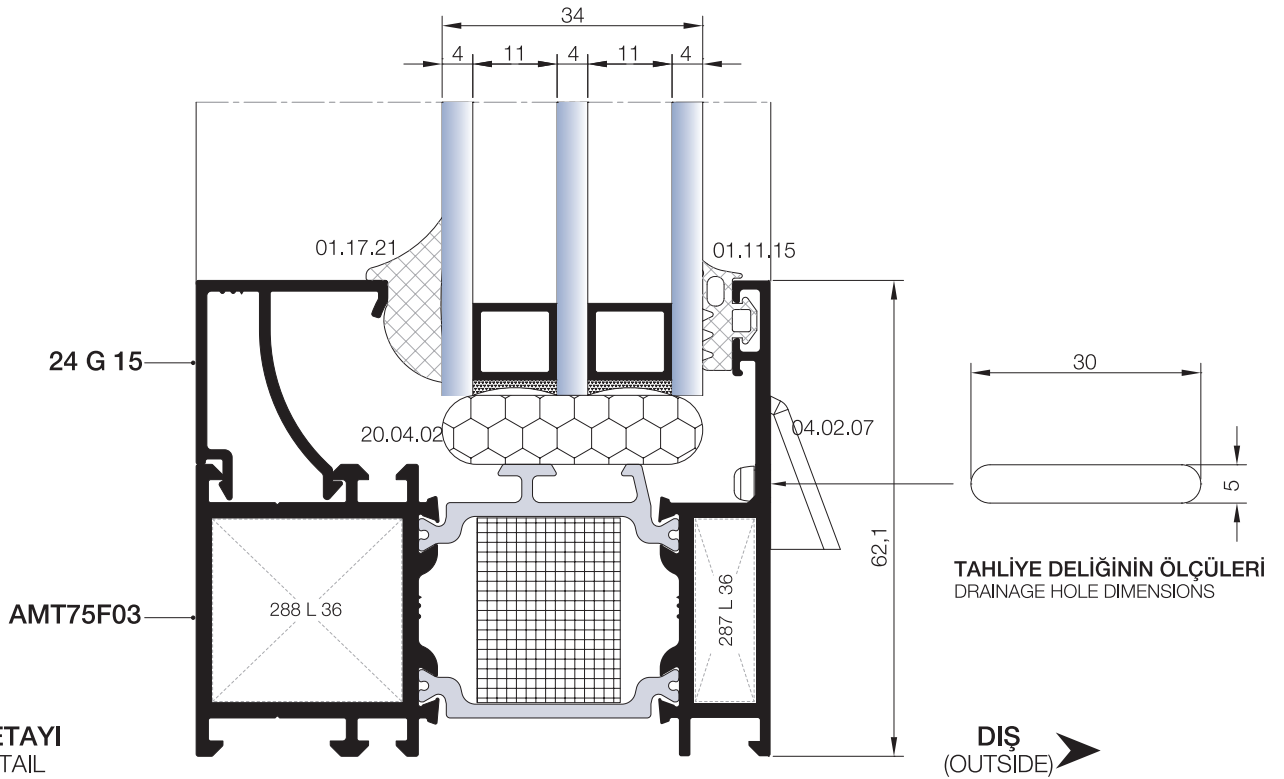
09

10

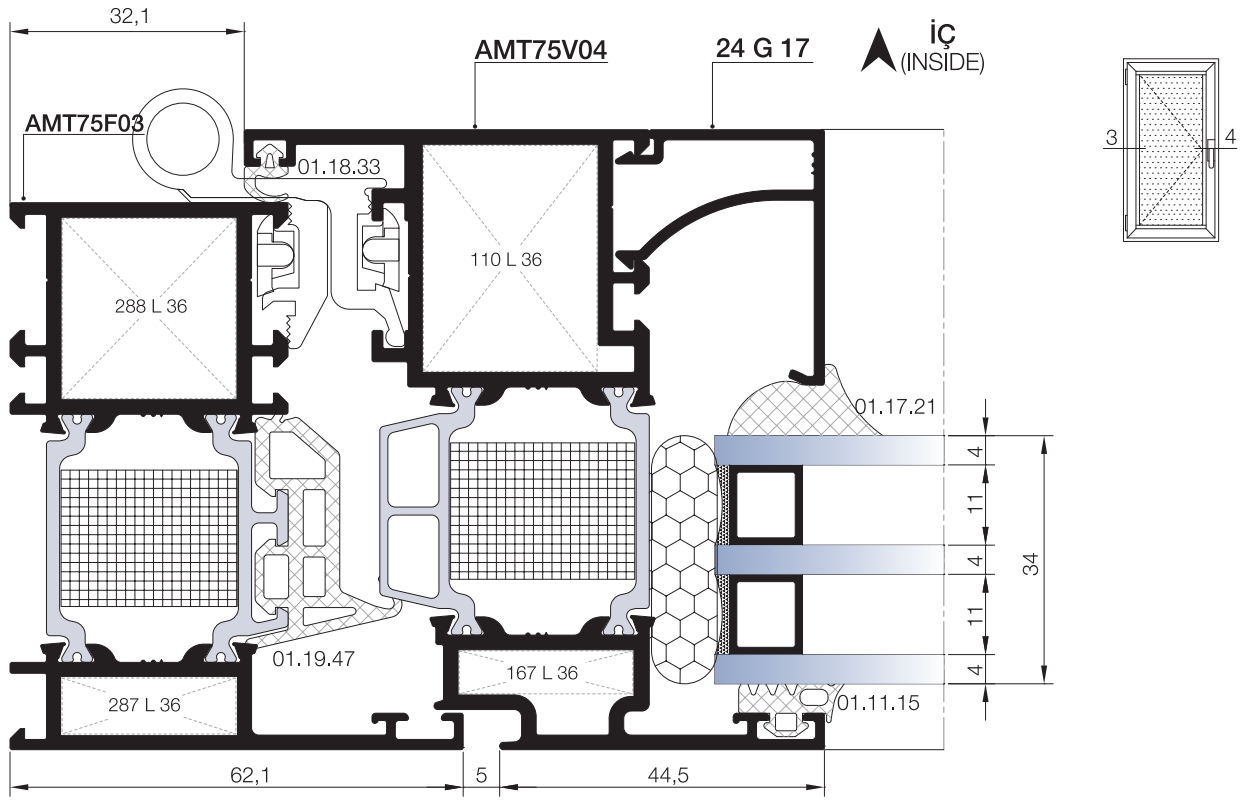
- 01
- 02
- 03
- 04
- 05
- 06
- 07
- 08
- 09
- 10



① DETAYI
DETAIL

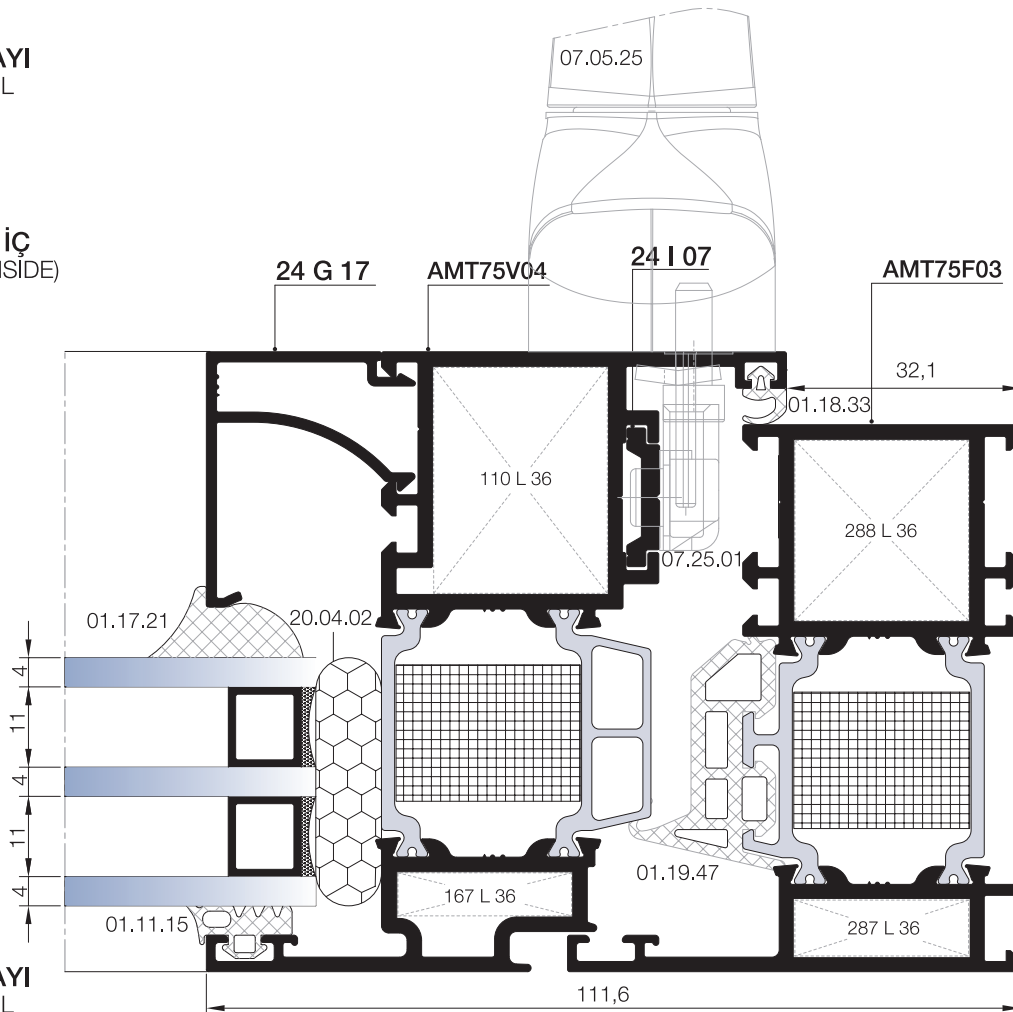


② DETAYI
DETAIL



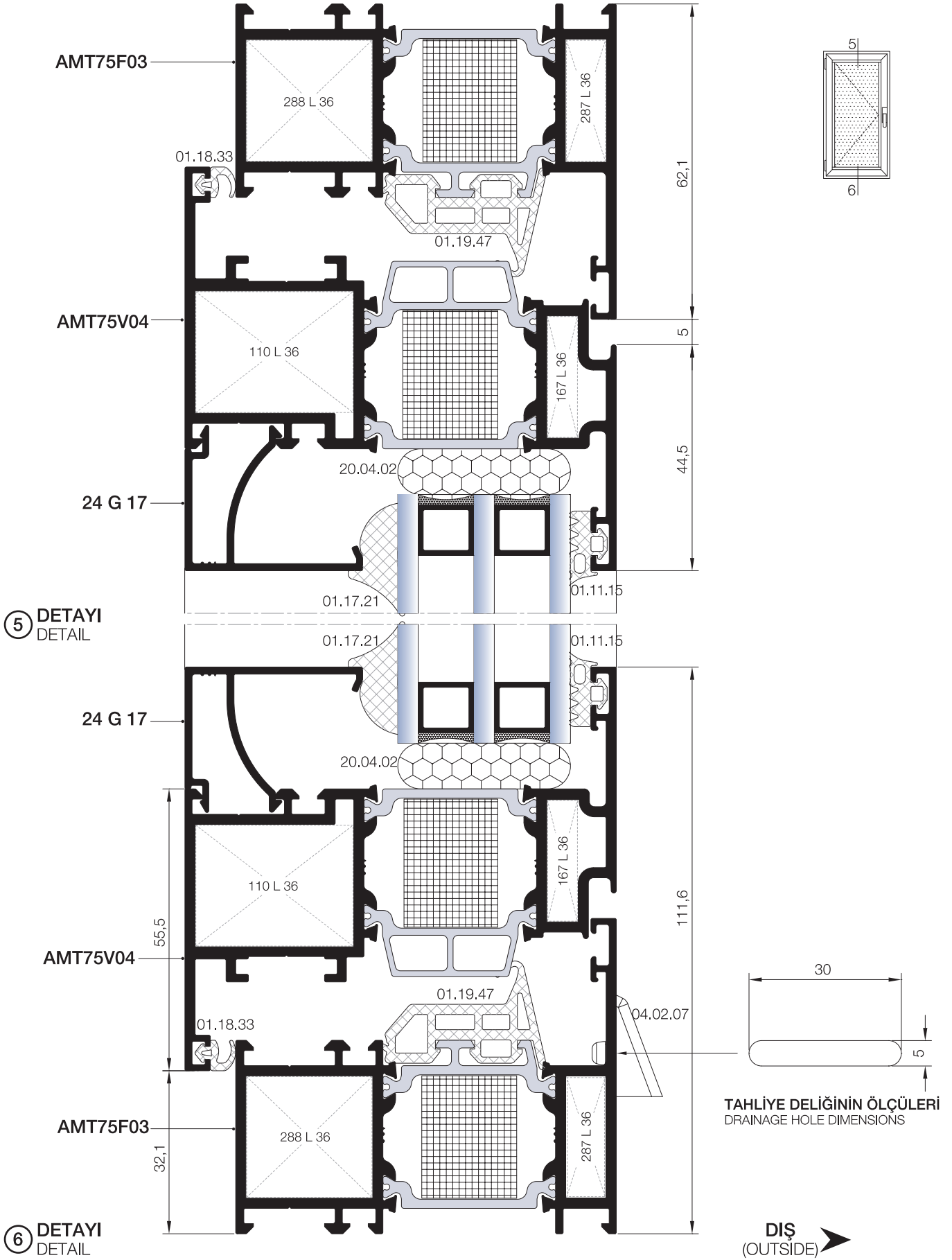
③ DETAYI
DETAIL

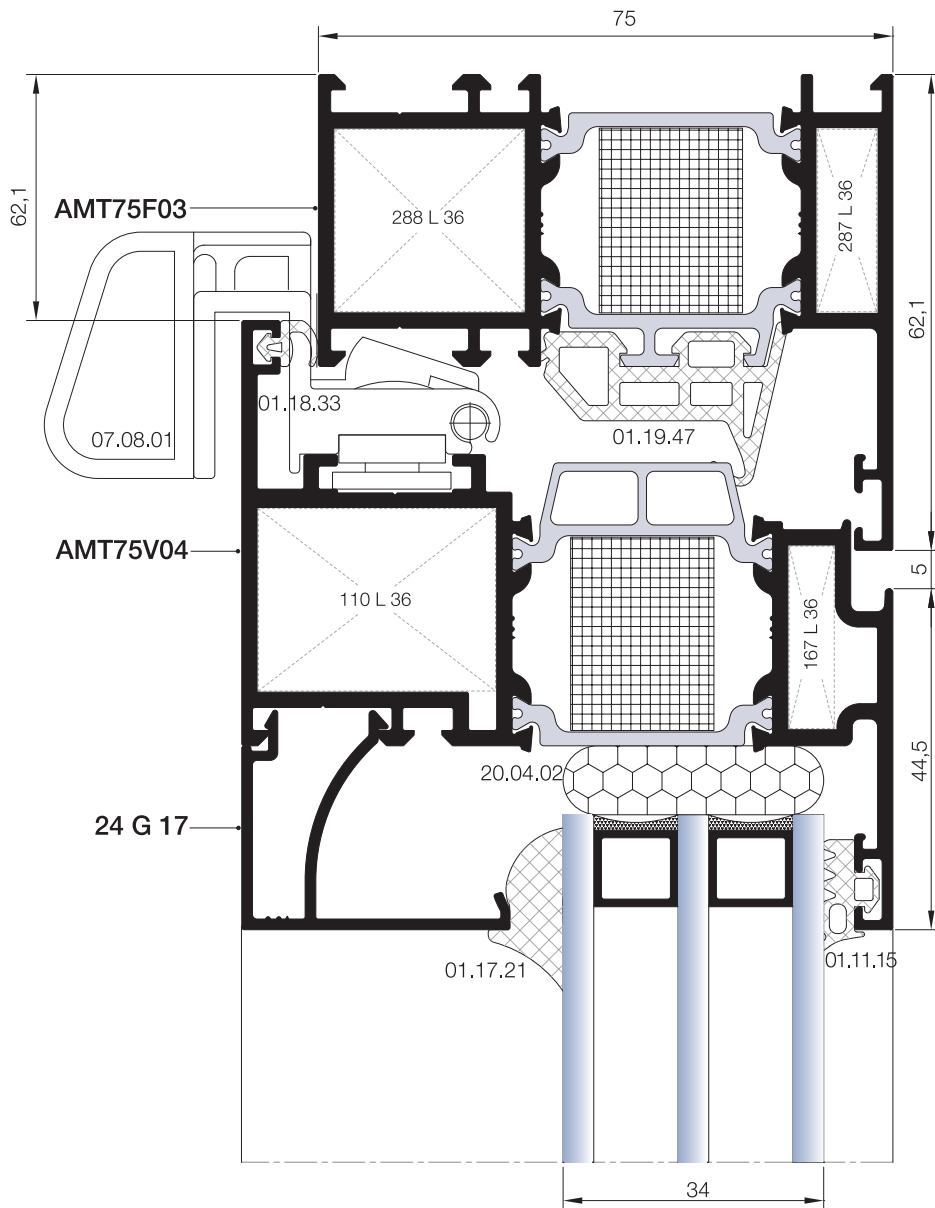
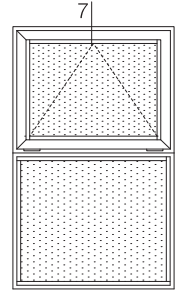
▲ iç
(INSIDE)

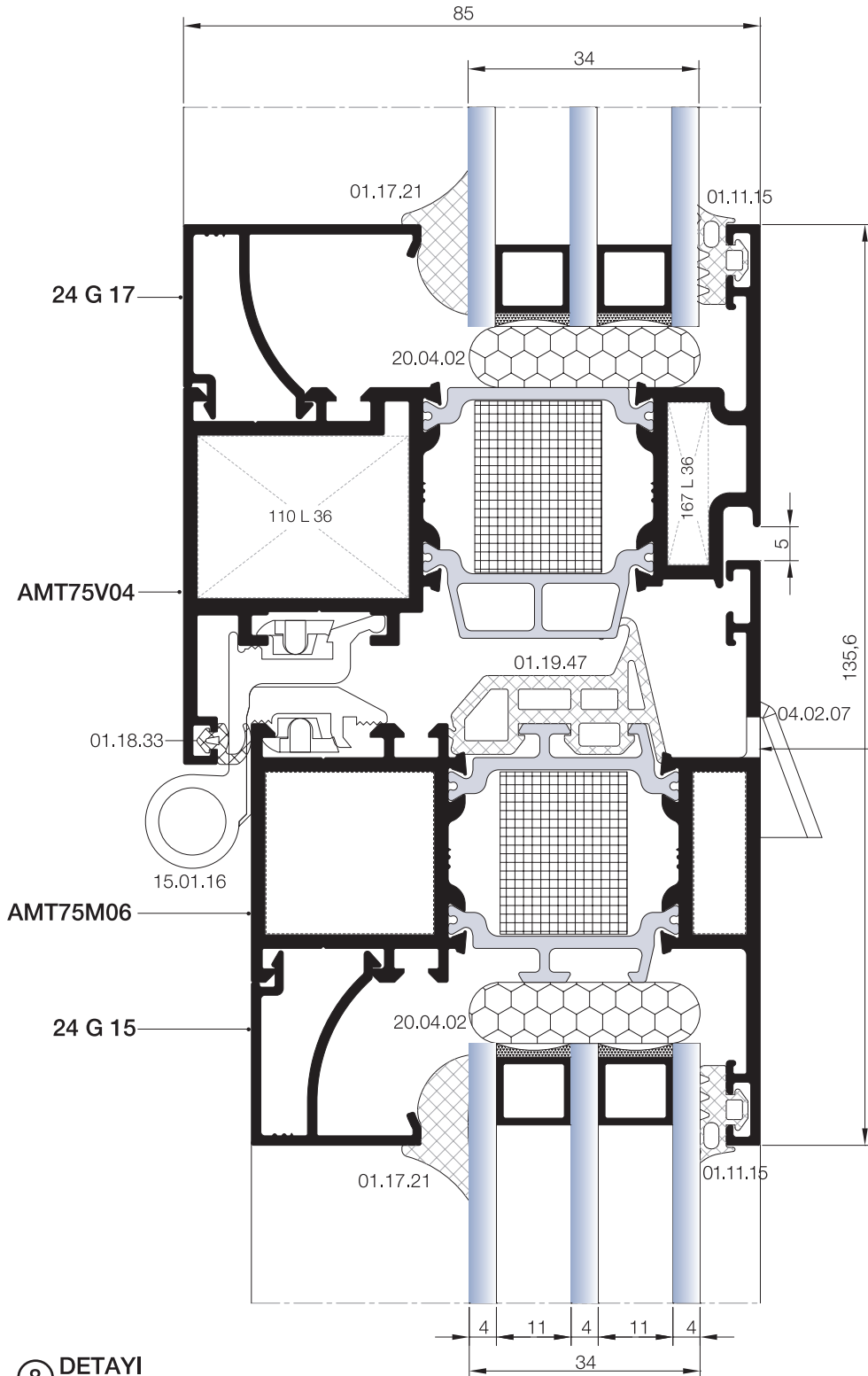
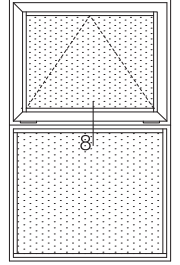


④ DETAYI
DETAIL

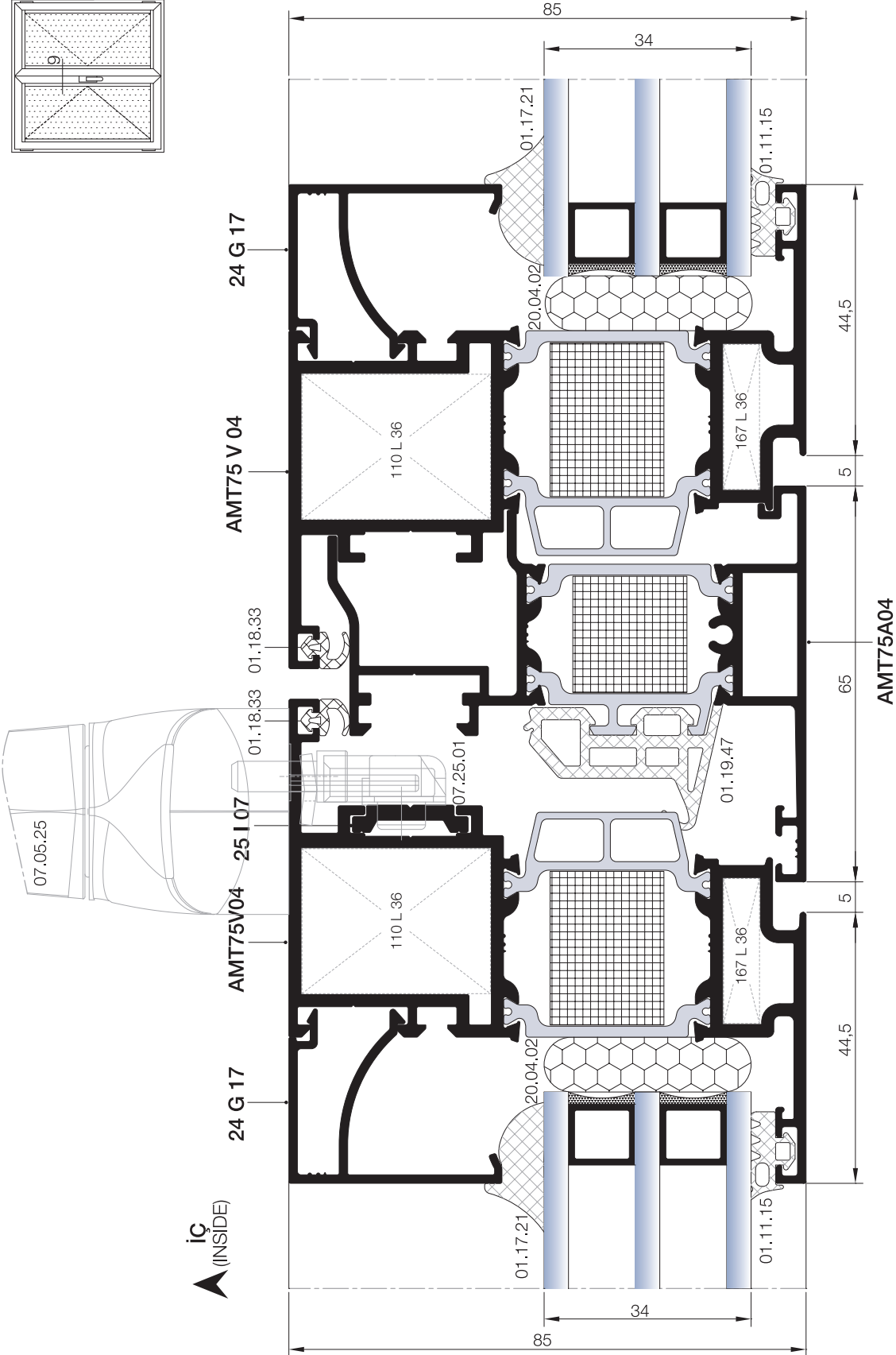
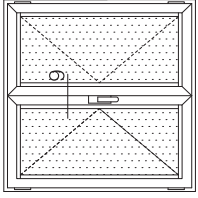
- 01
- 02
- 03
- 04
- 05
- 06
- 07
- 08
- 09
- 10



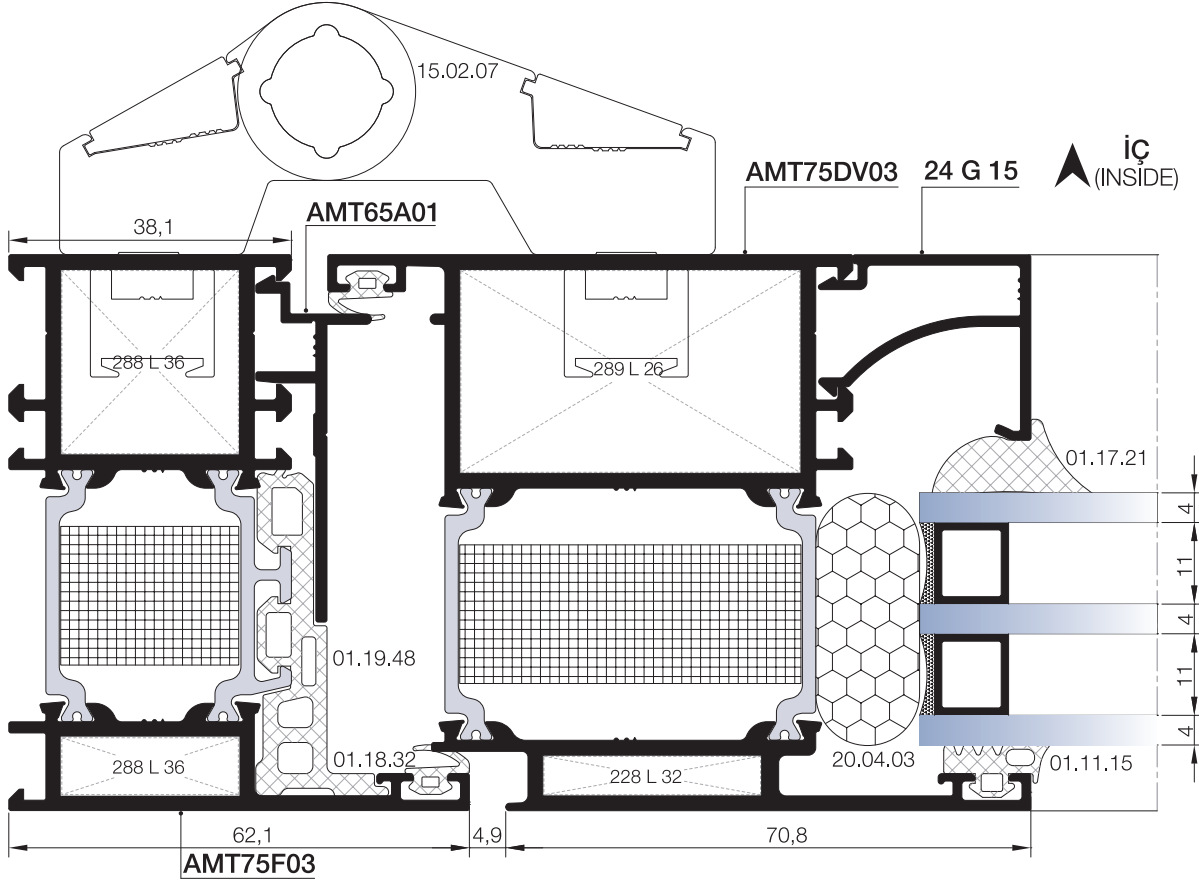
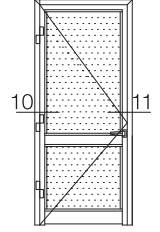




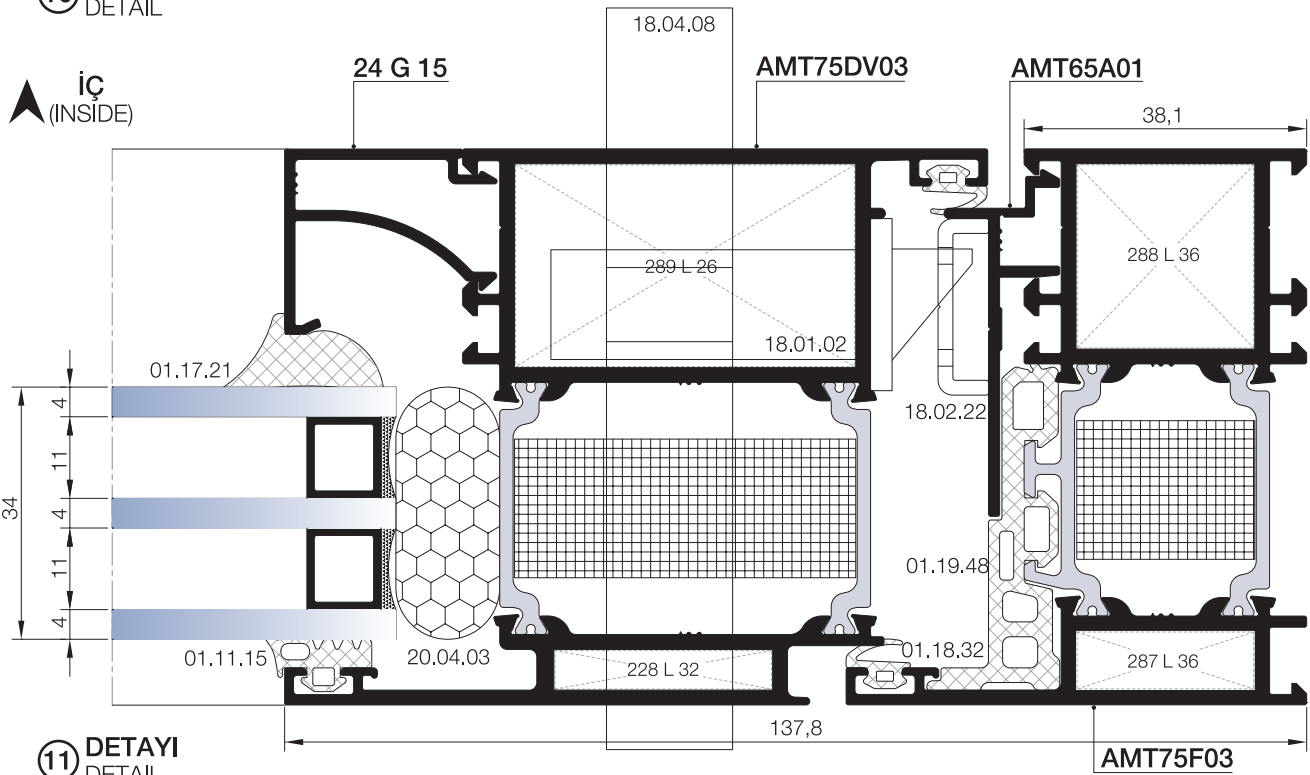
TAHLİYE DELİĞİNİN ÖLÇÜLERİ
DRAINAGE HOLE DIMENSIONS



İÇE AÇILIM HEMİYÜZ KAPI DETAYLARI
INWARD OPENING FLUSH DOOR DETAILS

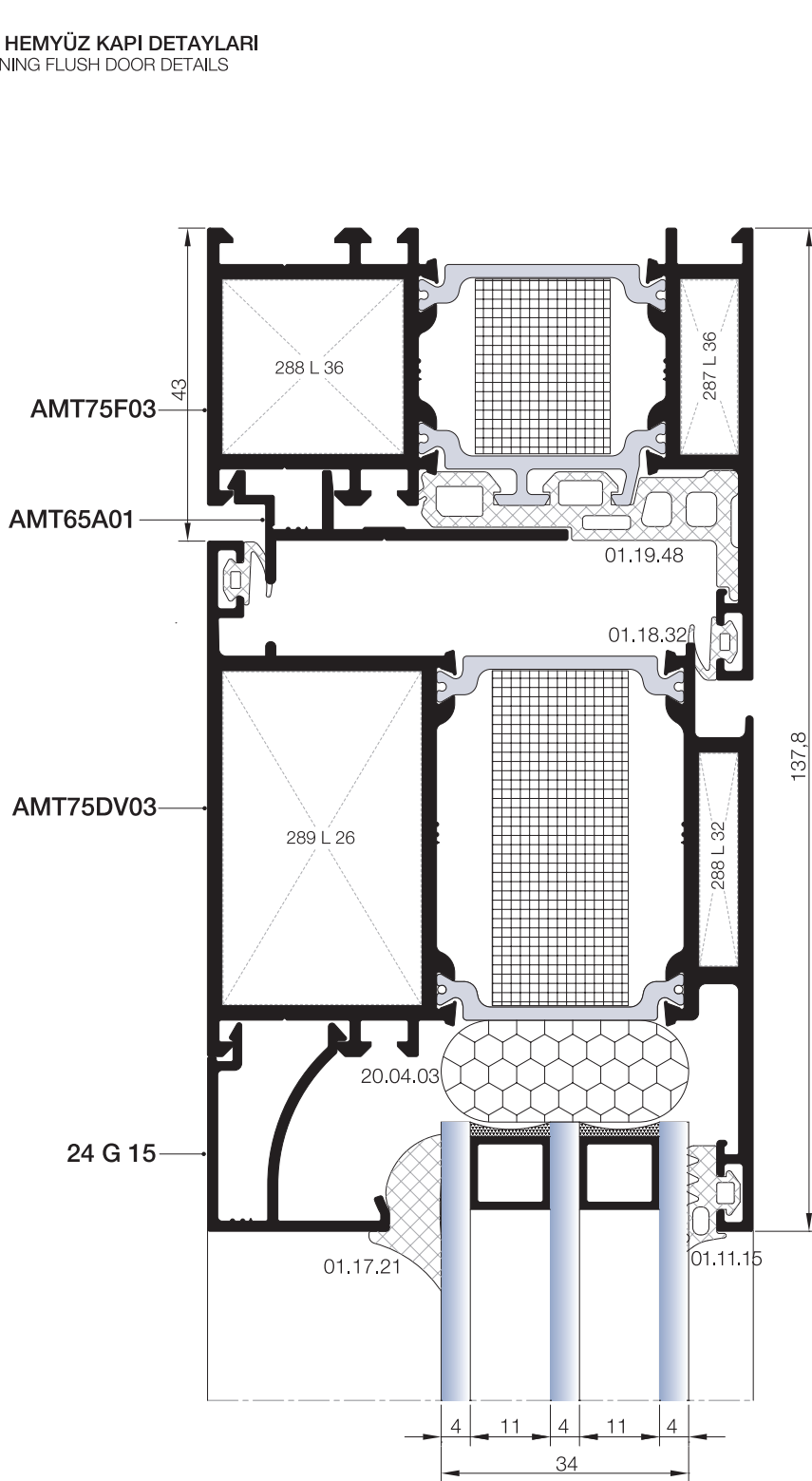


10 DETAYI
DETAIL

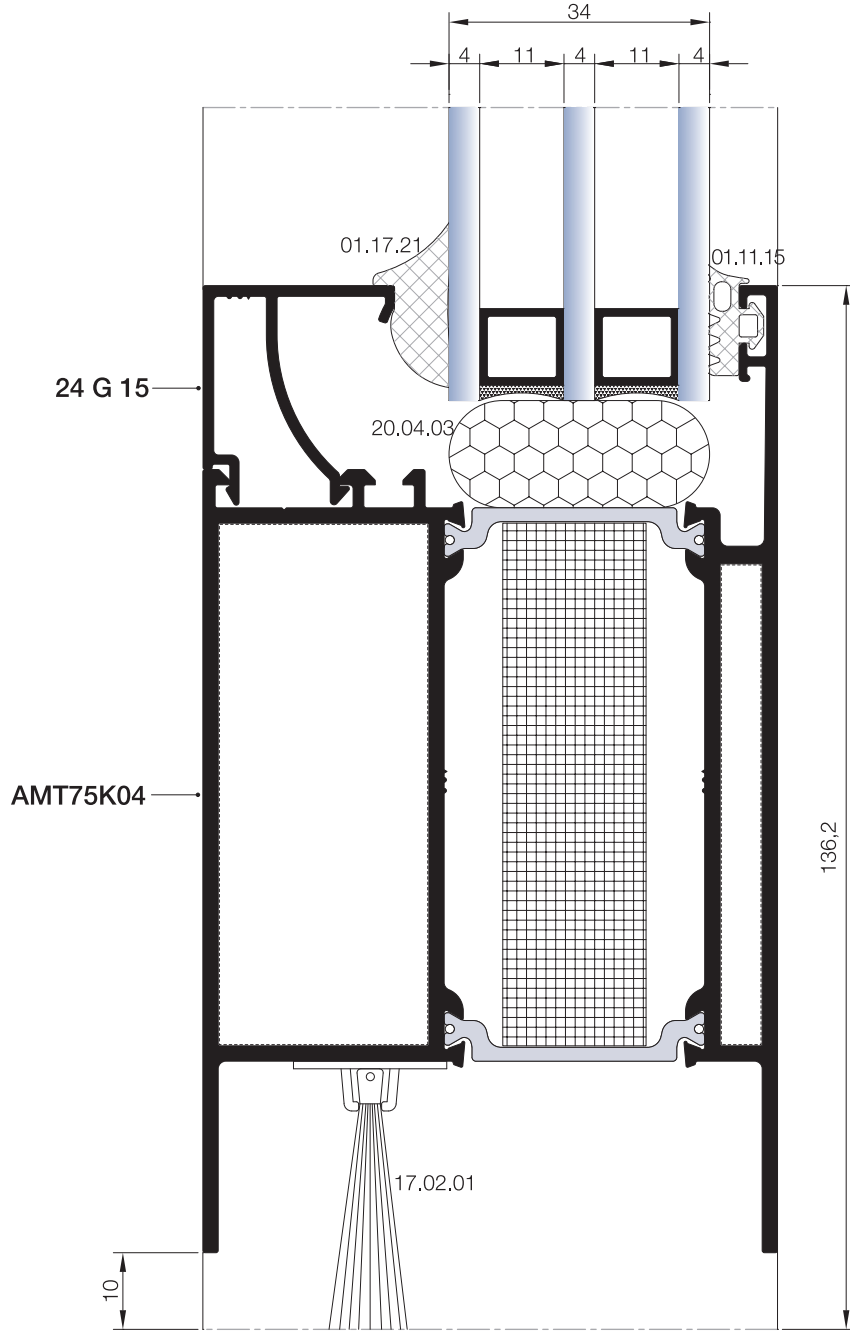


11 DETAYI
DETAIL

İÇE AÇILIM HEMYÜZ KAPI DETAYLARI
INWARD OPENING FLUSH DOOR DETAILS



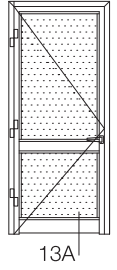
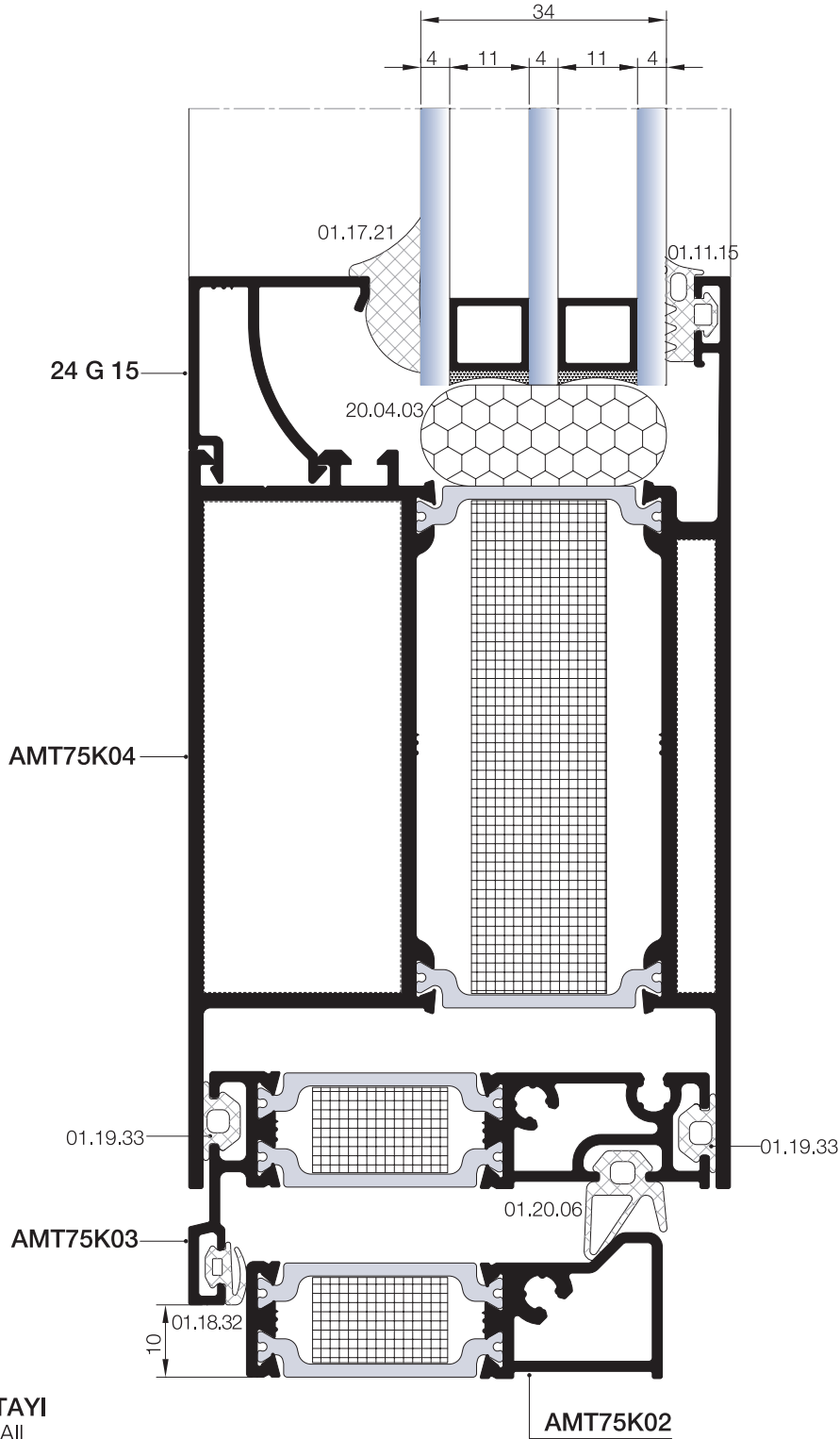
İÇE AÇILIM HEMYÜZ KAPI DETAYLARI
INWARD OPENING FLUSH DOOR DETAILS



13 DETAYI
DETAIL

DIŞ
(OUTSIDE) ➔

İÇE AÇILIM HEMYÜZ KAPI DETAYLARI
INWARD OPENING FLUSH DOOR DETAILS



01

02

03

04

05

06

07

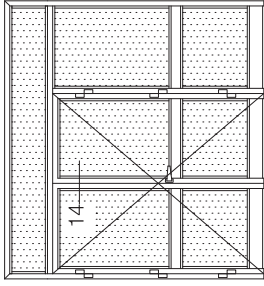
08

09

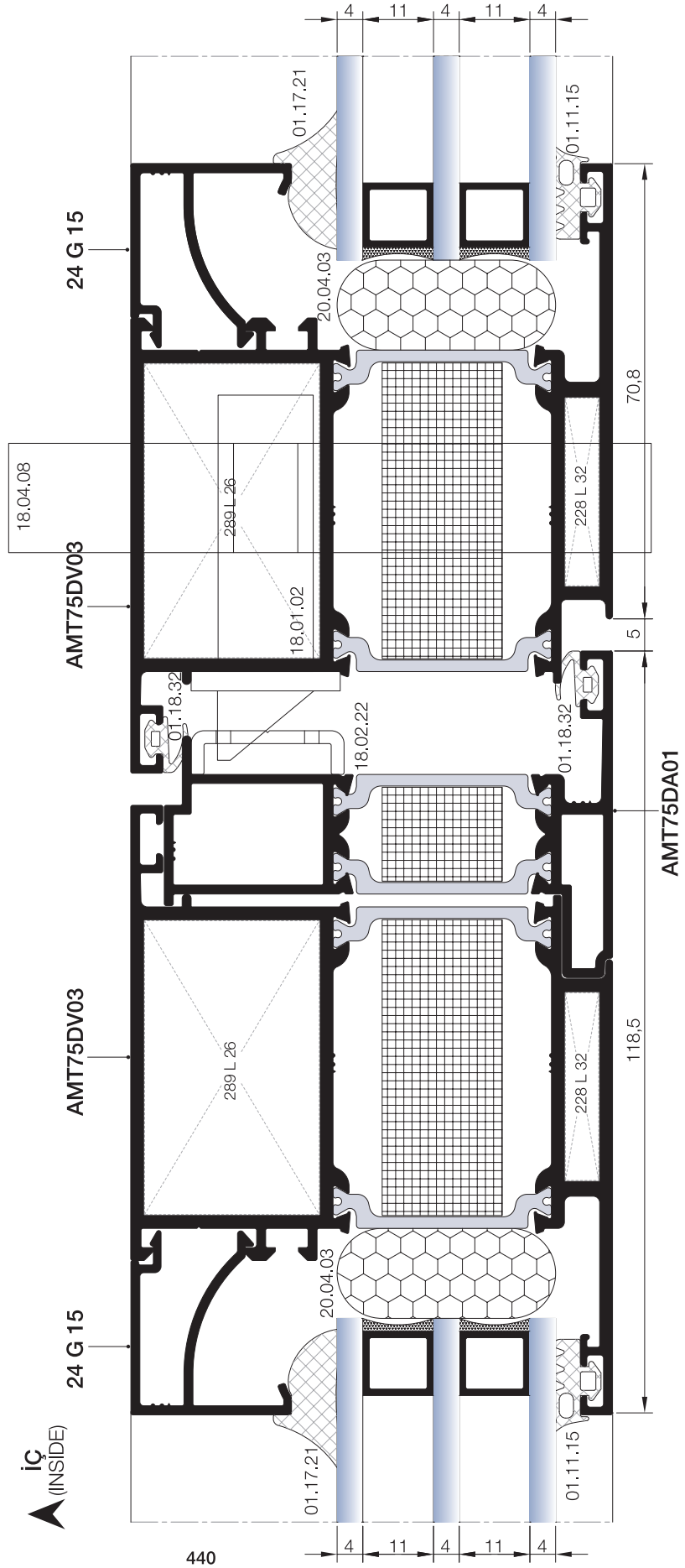
10

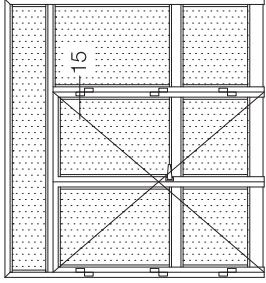
13A DETAYI
DETAIL

DIŞ
(OUTSIDE) ➔

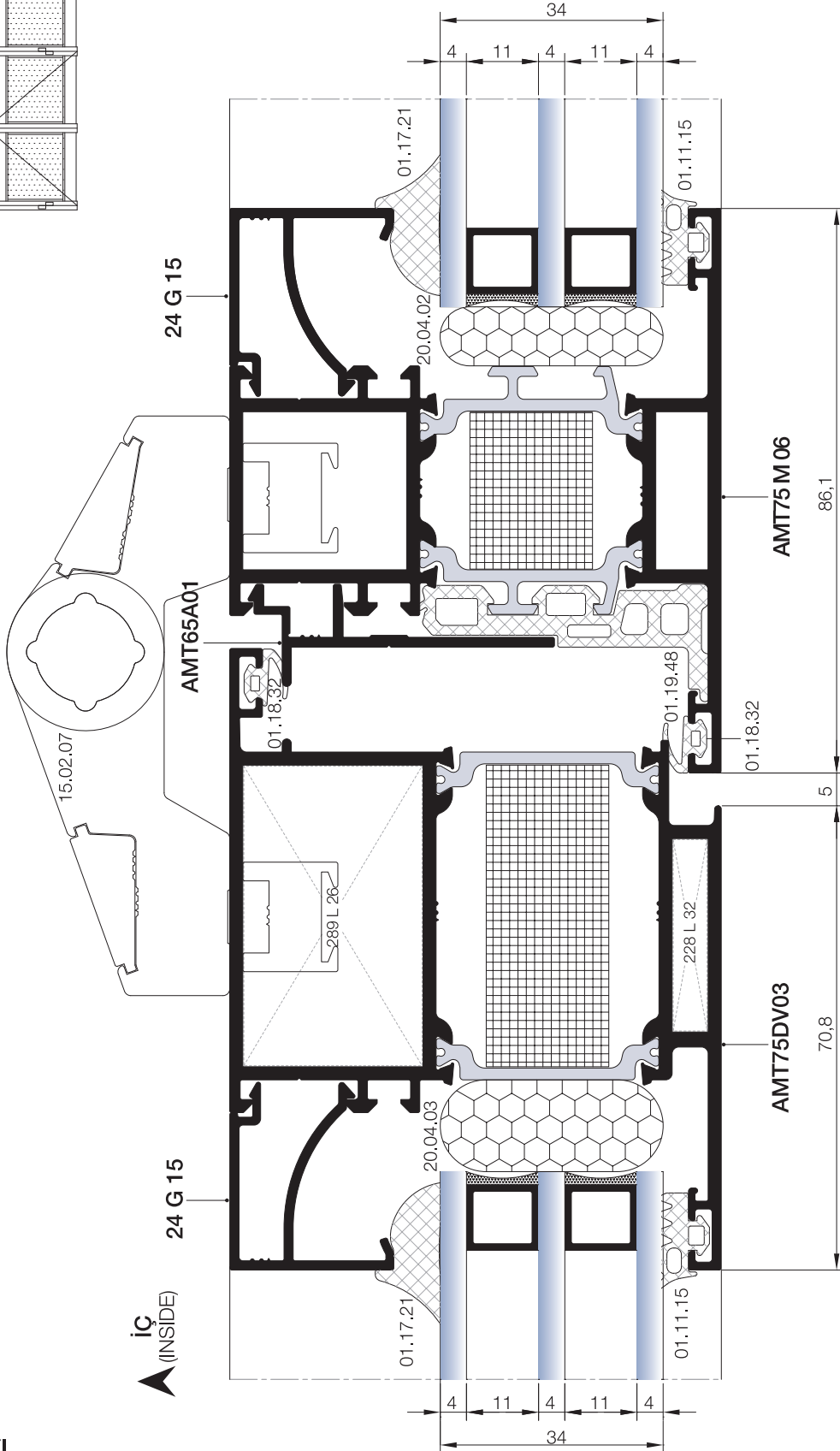


İÇE AÇILIM HEMİYÜZ KAPI DETAYLARI
INWARD OPENING FLUSH DOOR DETAILS

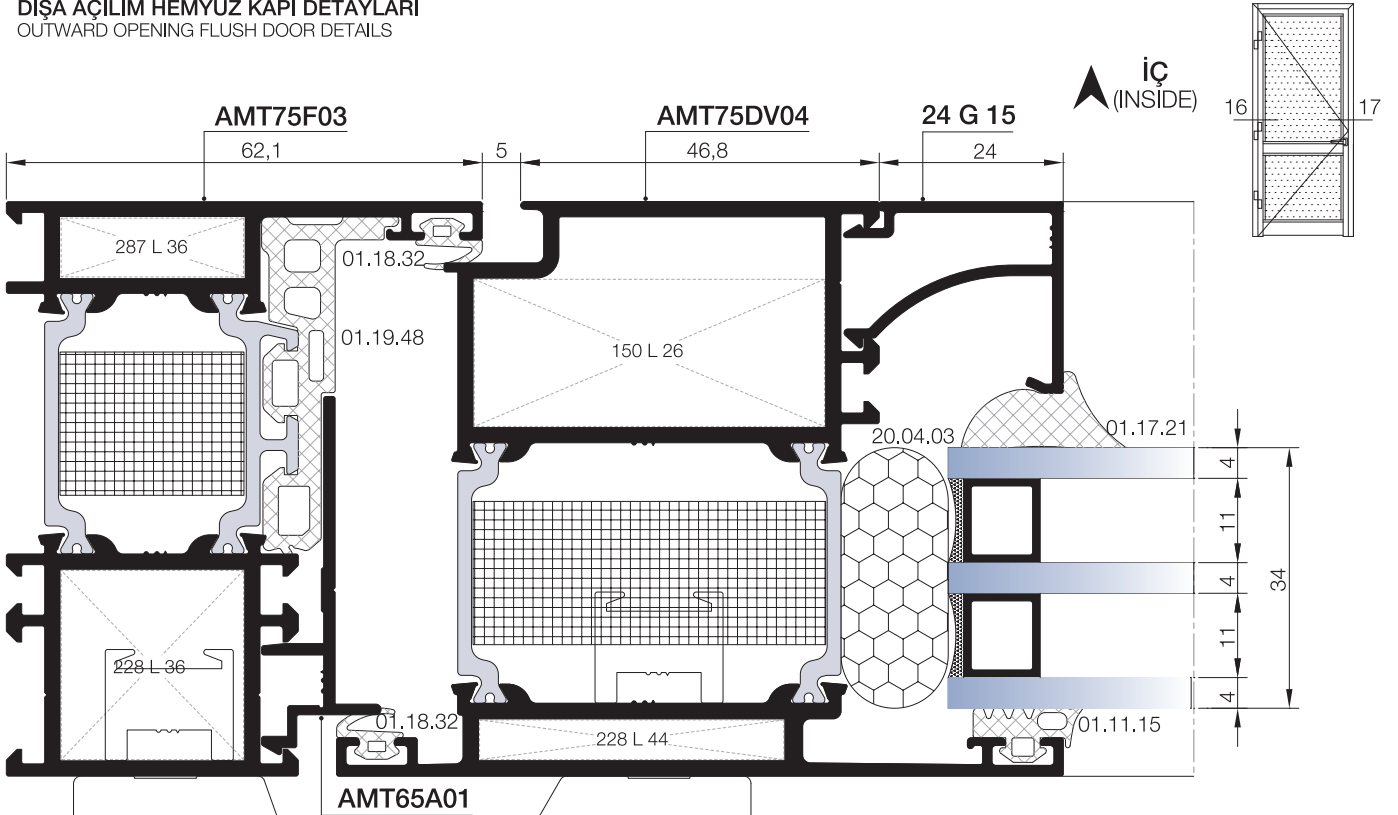




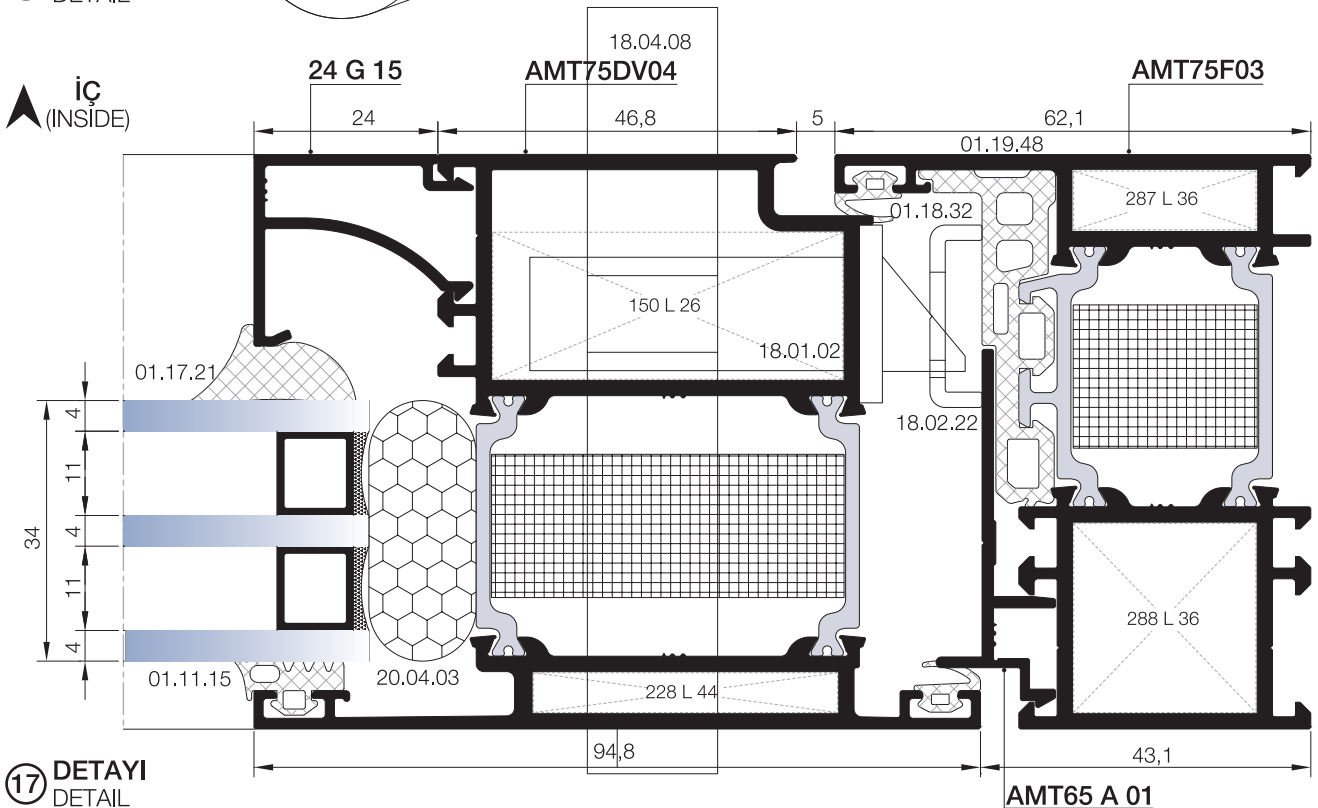
İÇE AÇILIM HEMYÜZ KAPI DETAYLARI
INWARD OPENING FLUSH DOOR DETAILS



DİŞA AÇILIM HEMYÜZ KAPI DETAYLARI
OUTWARD OPENING FLUSH DOOR DETAILS

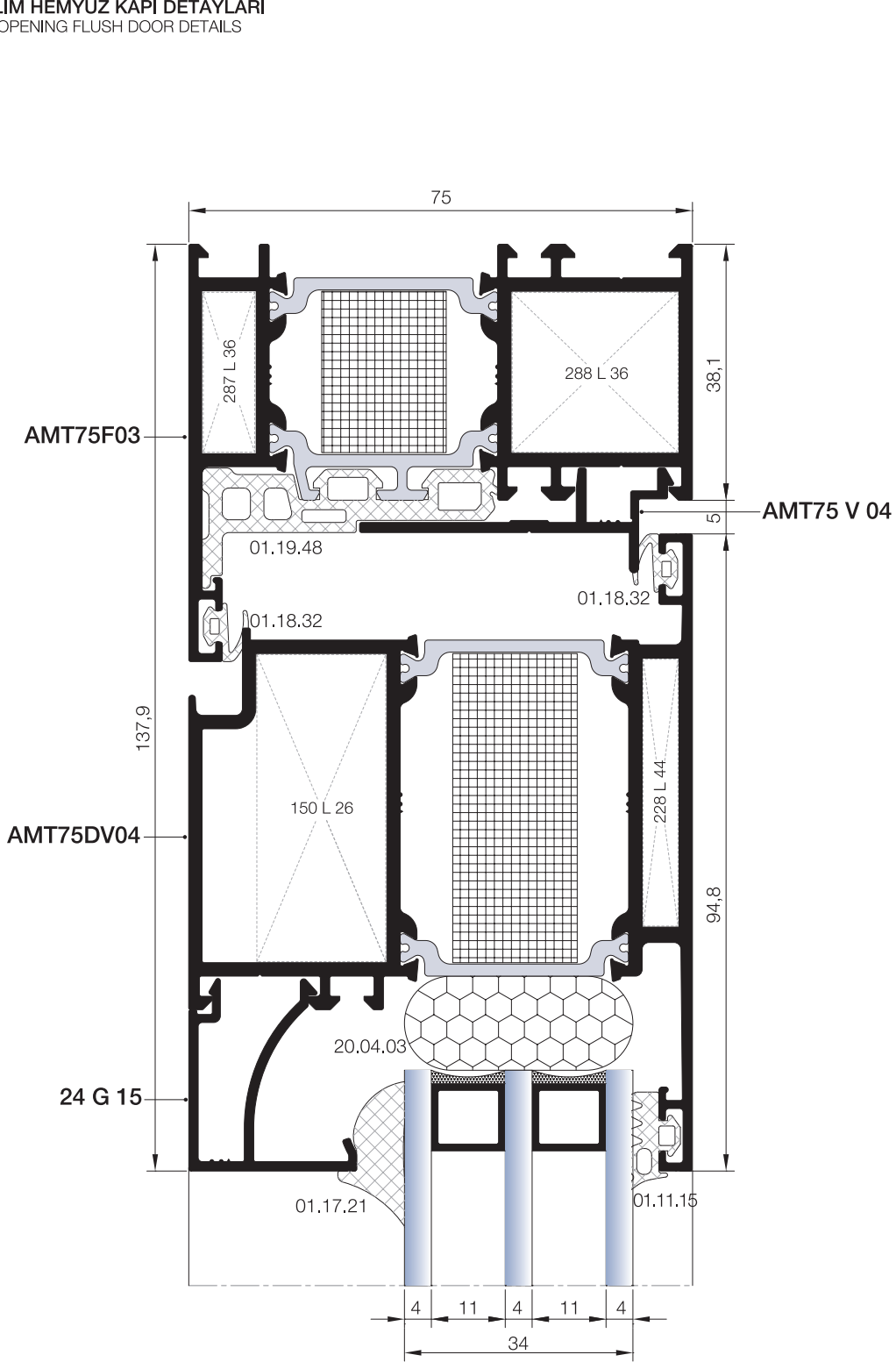


16 DETAYI
DETAIL



17 DETAYI
DETAIL

DIŐA AÇILIM HEMYÜZ KAPI DETAYLARI
OUTWARD OPENING FLUSH DOOR DETAILS



01

02

03

04

05

06

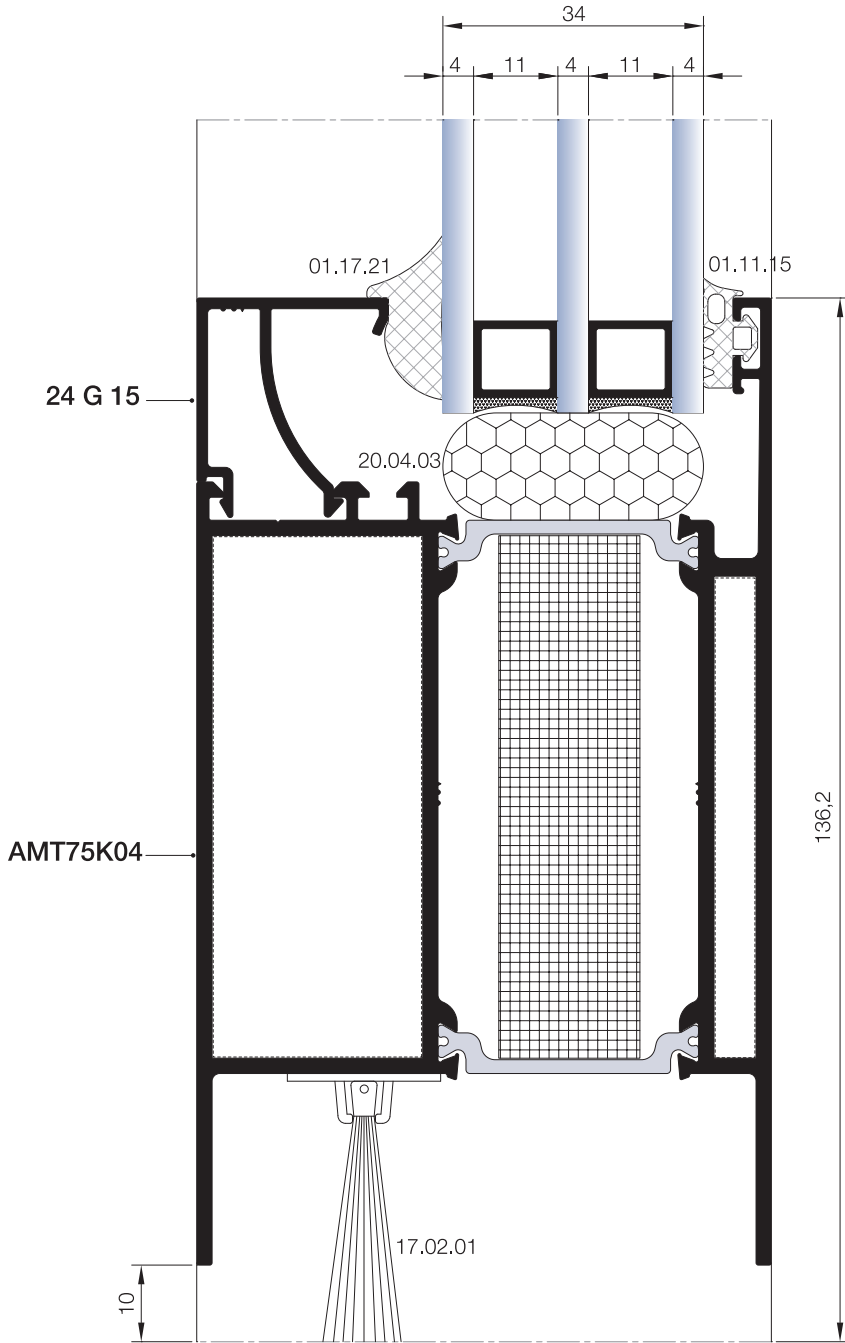
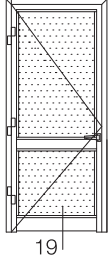
07

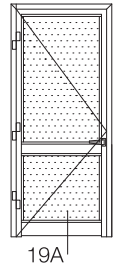
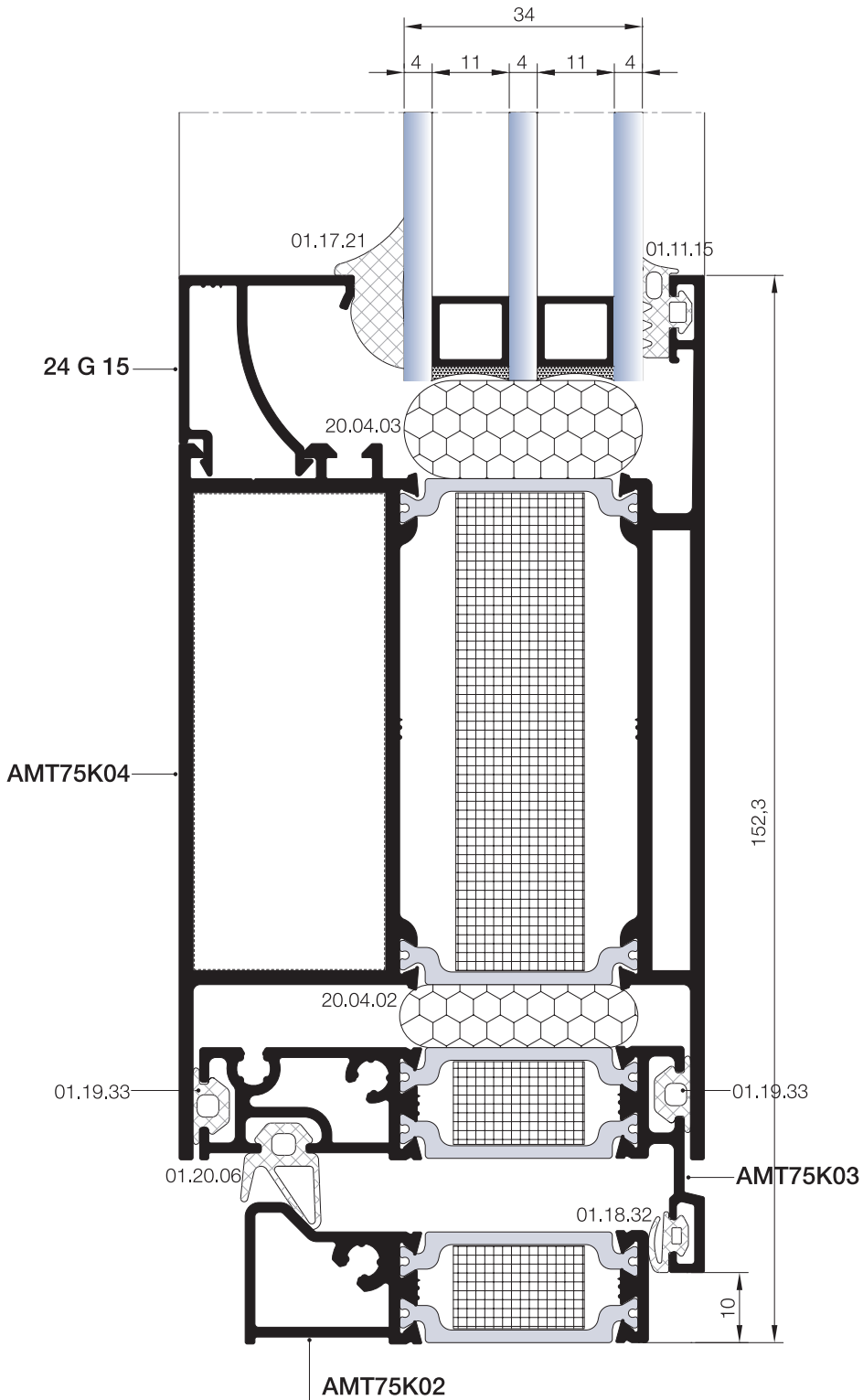
08

09

10

- 01
- 02
- 03
- 04
- 05
- 06
- 07
- 08
- 09
- 10





01

02

03

04

05

06

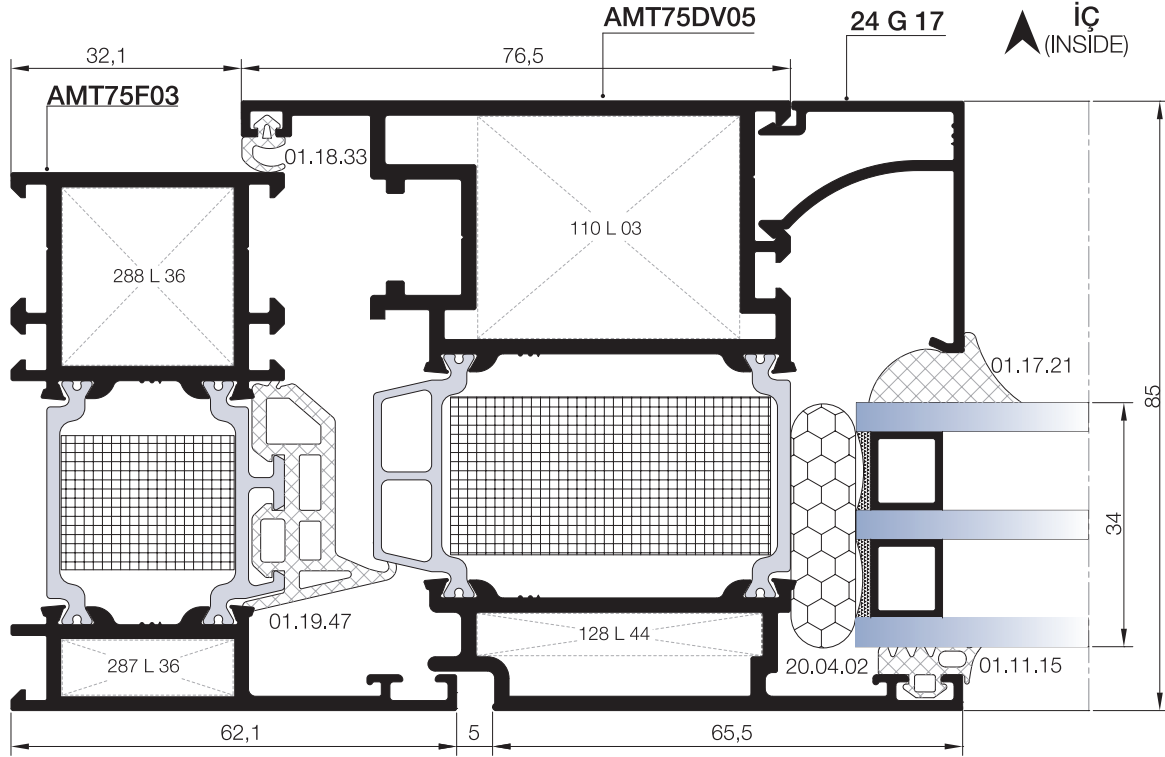
07

08

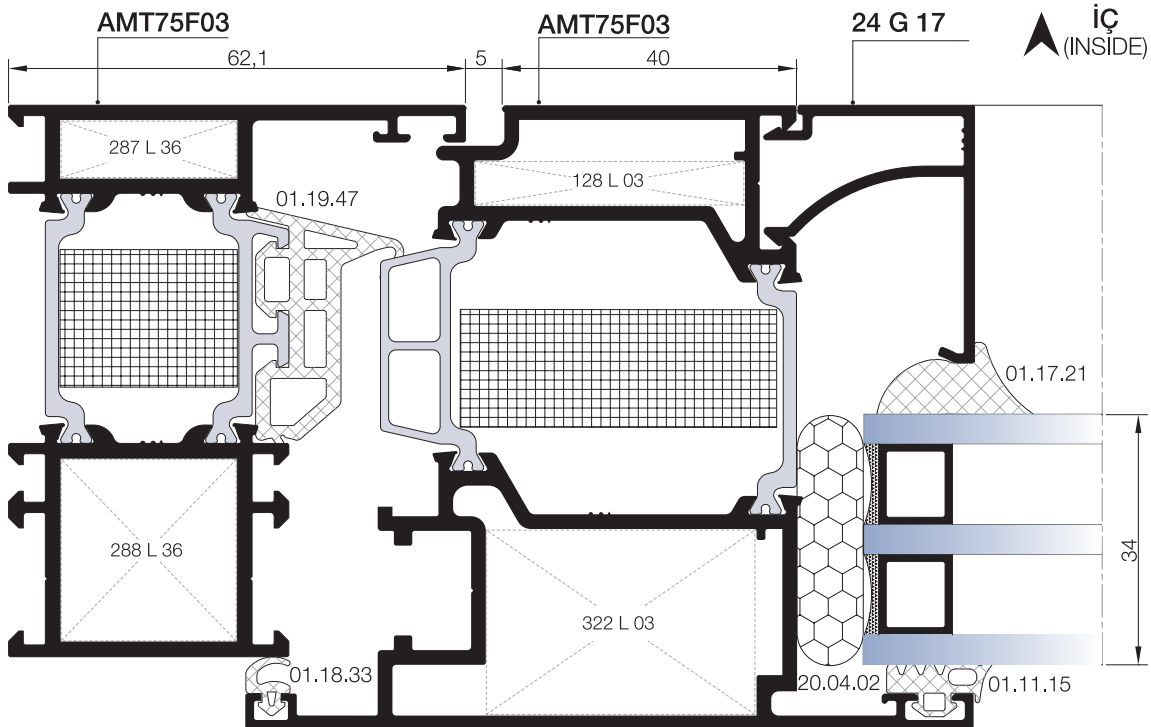
09

10

PVC AÇILIM AKSESUARINA UYGUN İÇE AÇILIM KANAT DETAYI
INWARD OPENING VENT DETAIL FOR PVC ACCESSORIES



20 DETAYI
DETAIL



21 DETAYI
DETAIL

PVC AÇILIM AKSESUARINA UYGUN DIŞA AÇILIM KANAT DETAYI
OUTWARD OPENING VENT DETAIL FOR PVC ACCESSORIES

